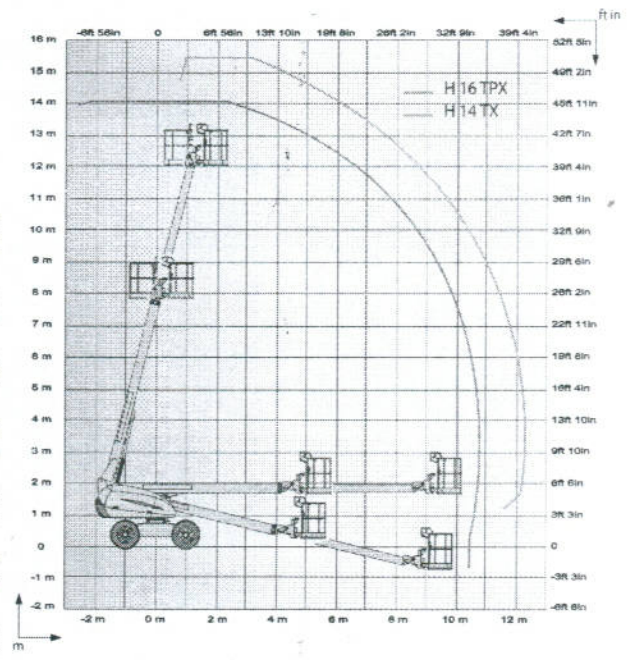




H14 TX / H16 TPX

ROUGH TERRAIN TELESCOPIC BOOMS



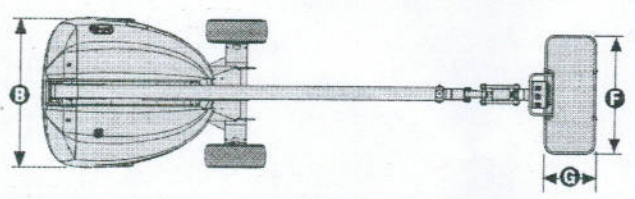
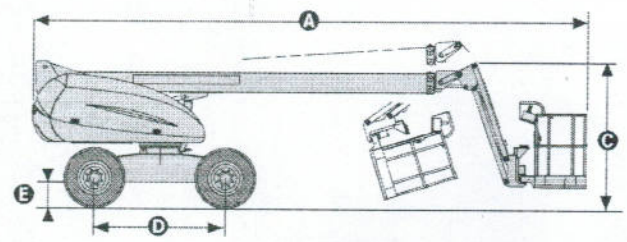
TECHNICAL DATA		H14 TX	H16 TPX
Working height		14.07 m	15.44 m
Platform height		12.07 m	13.44 m
Horizontal outreach		10.7 m	12.3 m
Lift capacity		230 kg	230 kg
F x G Platform size		2.3 x 0.8 m	1.8 x 0.8 m
A Length - stowed		7.6 m	8.43 m
H Length - storage		7.6 m	6.72 m
B Width		2.3 m	2.3 m
C Height - stowed		2.2 m	2.2 m
J Height - storage		2.2 m	2.5 m
Vertical jib rotation		N/A	140° (+70/-70)
Platform rotation		180° (+90/-90)	180° (+90/-90)
Boom rotation angle		+75°/-13°	+75°/-13°
Turntable rotation		360°	360°
Tailswing		85 cm	85 cm
D Wheelbase		2 m	2 m
E Ground clearance		35 cm	35 cm
Tilt		5°	5°
Drive speed		0.8 - 6 km/h	0.8 - 6 km/h
Gradeability		50 %	50 %
Turning radius - outside		4.5 m	4.5 m
Tires - foam-filled		14-17.5	14-17.5
Engine		31,2 kW - 42,4 hp	31,2 kW - 42,4 hp
Weight		5900 kg	6800 kg

STANDARD EQUIPMENT

- 4 wheel drive
- 5° tilt alarm
- 12 V electrical control system
- 12 V - 95 Ah - 450 A battery
- Load limiter in cage
- Free wheeling device
- horn
- Battery electric emergency control in cage
- Hourmeter
- Slewing block pin
- Towing hooks / lifting eyes
- 2 hooks for safety harnesses in platform

OPTIONS AND ACCESSORIES

- H 16 TPX: larger platform: 2.3 m x 0.8 m
- Power to platform
- Rotating beacon
- Working light
- Motion alarm
- Biodegradable oil
- Catalytic exhaust
- 3.3 kW on-board generator
- Cold weather kit
- Hydraulic oil for hot countries



UNITED

Forklift and Access Solutions

131 607

www.unitedequipment.com.au

SALES | RENTALS | SERVICE | PARTS | FINANCE | TRAINING

Perth | Bunbury | Melbourne | Ballarat | Sydney | Brisbane | Darwin